



House Extension Process



Step One



Consultation

Step Two



Design

Step Three



Application

Step Four



Approval

Step Five



Build

Consultation - Contact us by either telephone or E mail or use the contact page. We will then arrange a time convenient to you for us to come and visit you. This initial visit will consist of a free consultation where we will discuss your requirements and offer you suggestions and helpful advice. We will provide you with a set price for us to carry out your requirements.

Design - A Measured site survey will be carried out to produce drawings which are completed approximately 3-5 working days and returned for approval. Once you are happy with the drawings paper copies will be provided to obtain quotes from builders.

Application - We will submit the drawings to the Local Authority for Planning Permission on your behalf, along with the necessary forms. This means that you do not have to deal with any paperwork yourself.

Approval - We will advise you when written permission has been granted.

Build - You may then instruct your builder to carry out the work.



Single Storey Extension



The addition of a double storey extension can add significant value to your home, plus it can stop you having to move house to a larger property and the expensive fees involved. Over the years we have been asked to design double storey extensions for the following uses;

- Kitchen extension
- Utility room
- Additional reception room
- Sun room
- Play room
- Study space

Planning Stage Design and Draw From £275.00 EX VAT

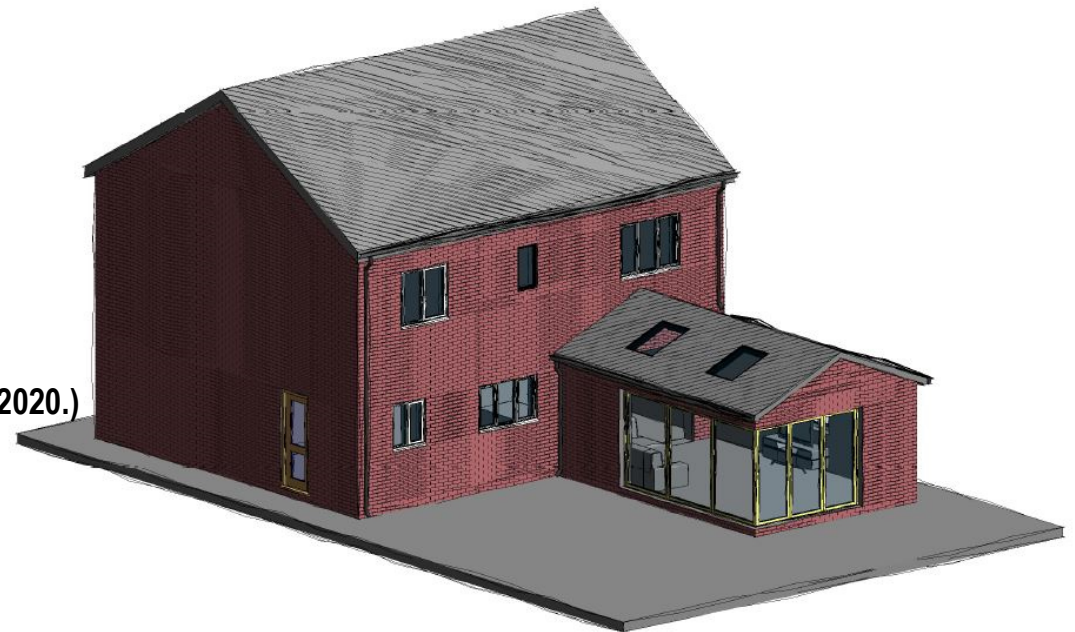
- Initial consultation.
- Carry out measured site survey.
- Produce planning stage drawings.
- Submit drawings to local authority.

(Planning Permission Application Fee £206.00 from the 1st January 2020.)

Building Regulation Stage From £150.00 EX VAT

- Produce detail drawings for the approved scheme
- Submit drawings to local authority

If your extension requires any further local authority reports, such as a flood risk assessment, tree survey, structural calculations etc; then these are charged separately to our design fees.





Double Storey Extension



The addition of a double storey extension can add significant value to your home, and help turn your house into the home you've always wanted. A single storey extension can be designed to be;

- Additional bedroom
- En-suite bathroom
- Home cinema
- Nursery
- Games room
- Home office

Planning Stage Design and Draw From £375.00 EX VAT

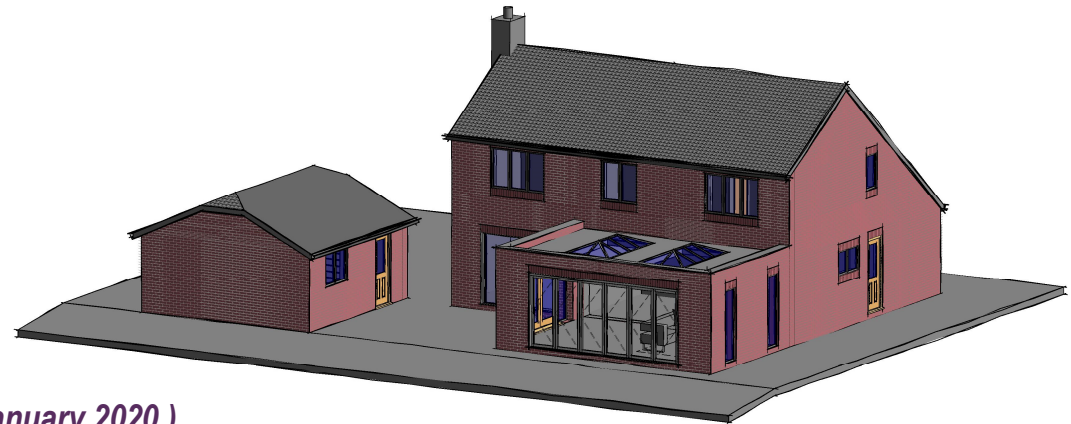
- Initial consultation.
- Carry out measured site survey.
- Produce planning stage drawings.
- Submit drawings to local authority.

(Planning Permission Application Fee £206.00 from the 1st January 2020.)

Building Regulation Stage From £250.00 EX VAT

- Produce detail drawings for the approved scheme
- Submit drawings to local authority

If your extension requires any further local authority reports, such as a flood risk assessment, tree survey, structural calculations etc; then these are charged separately to our design fees.





Loft Conversion



The addition of a loft conversion can add significant value to your home, and help turn your house into the home you've always wanted.

A loft conversion can be designed to be;

- Additional bedroom
- En-suite bathroom
- Home cinema
- Nursery
- Games room
- Home office

Design and Draw From £375.00 EX VAT

- Initial consultation.
- Carry out measured site survey.
- Produce detail drawings for the approved scheme
- Submit drawings to local authority



If your extension requires any further local authority reports, such as a flood risk assessment, tree survey, structural calculations etc; then these are charged separately to our design fees.